

# Programme update on the new working arrangements for the new retail market

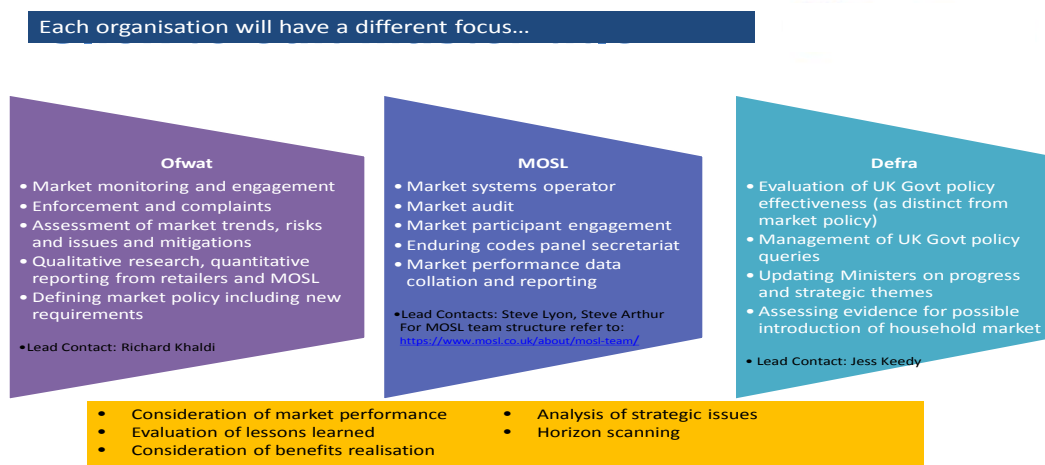
30 March 2017

## 1. Introduction

From 1 April 2017, there will be a new working structure at Defra, Ofwat and MOSL to support the opening of the new retail market. This programme update is for existing and potential market participants and other stakeholders to inform them of the new working arrangements, post market opening.

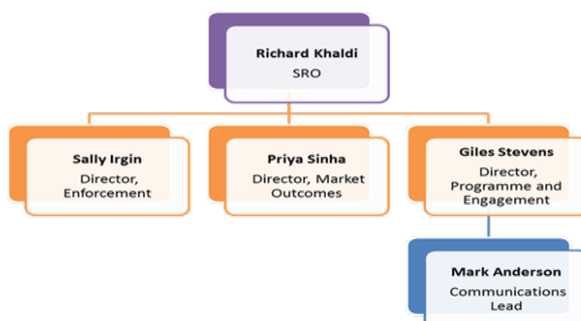
## 2. New structure and working arrangements

Defra, Ofwat and MOSL will have different responsibilities, from 1 April. This approach to market opening is designed to recognise both the separate and joined nature of the work that will be undertaken to ensure the new retail market is a success.



## 3. Market Outcomes and Enforcement (MOE)

To support the new retail market at Ofwat, from 1 April the Market Outcomes and Enforcement (MOE) comes into effect and will be responsible for regulating the new retail market. The new MOE organisation structure at Ofwat is outlined below.



For enquiries please contact: [CaseManagementOffice@ofwat.gsi.gov.uk](mailto:CaseManagementOffice@ofwat.gsi.gov.uk)